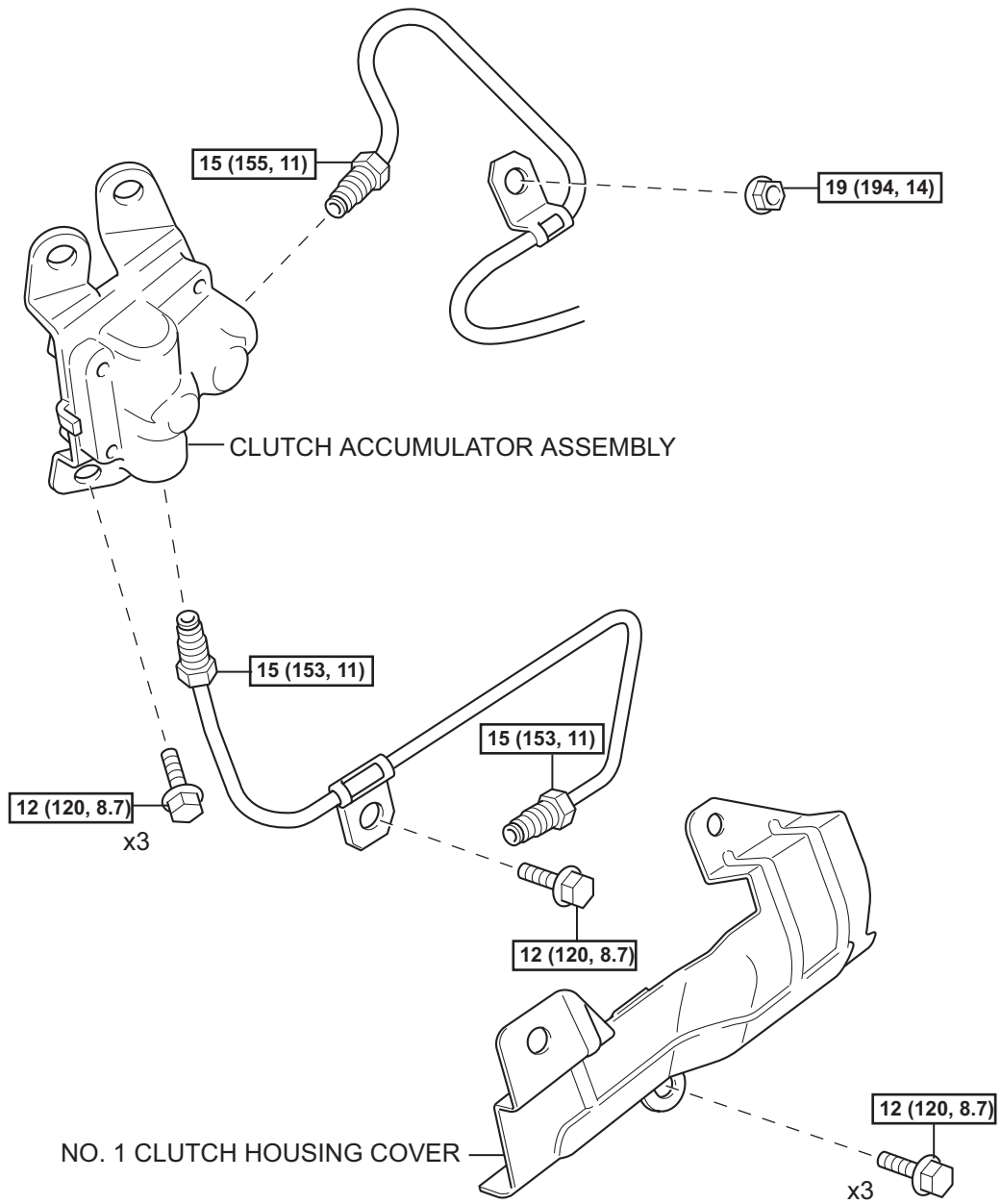


CLUTCH ACCUMULATOR

COMPONENTS

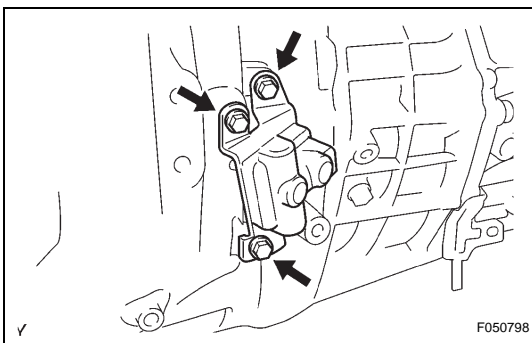
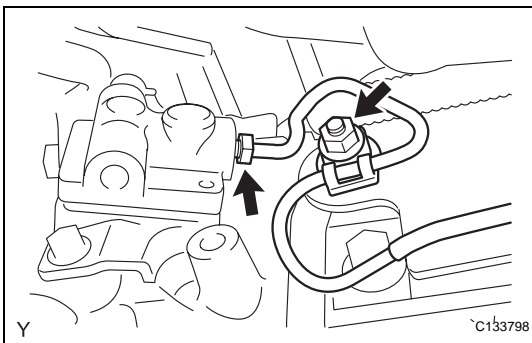
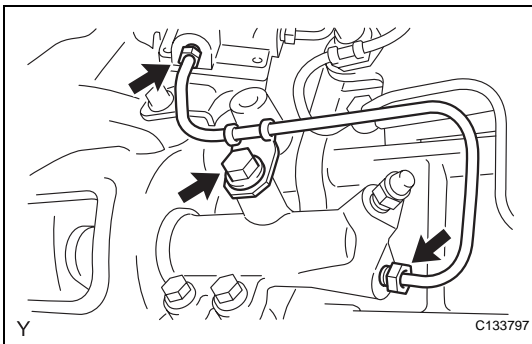
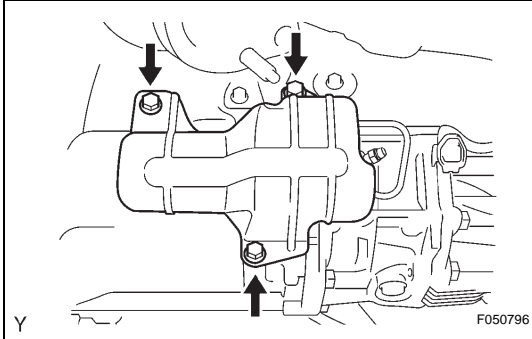


N*m (kgf*cm, ft*lbf) :Specified torque

CL

REMOVAL

1. DRAIN CLUTCH FLUID
2. REMOVE NO. 2 EXHAUST FRONT PIPE ASSEMBLY
(See page [EX-4](#))
3. REMOVE NO. 2 MANIFOLD STAY (See page [MT-9](#))
4. REMOVE NO. 1 CLUTCH HOUSING COVER
 - (a) Remove the 3 bolts and No. 1 clutch housing cover.



5. REMOVE CLUTCH ACCUMULATOR ASSEMBLY
 - (a) Using SST, disconnect the flexible hose tube from the clutch accumulator.
SST 09023-00101
HINT:
Use a container to catch the fluid.
 - (b) Remove the bolt and clutch line bracket.
 - (c) Using SST, disconnect the flexible hose tube from the clutch accumulator.
SST 09023-00101
 - (d) Remove the nut and clutch line bracket.
 - (e) Remove the 3 bolts and clutch accumulator.